

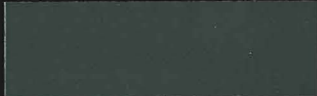


Colorize

your stove pipe, wood, pellet, or gas heating appliance with Stove Bright® high temperature paint 1200°F/650°C



1990 SATIN BLACK



6198 FOREST GREEN



6146 LEATHER BROWN



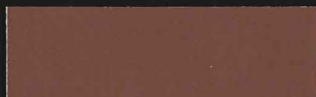
6199 REDWOOD



6159 METALLIC BROWN



6201 CHARCOAL



6192 RUSSET



6223 EMERALD GREEN METALLIC



6193 METALLIC GRAY



6224 ADOBE TAN



6194 SKY BLUE



6230 GOLDENFIRE BROWN



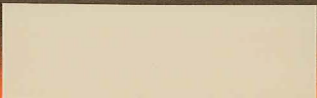
6195 MAHOGANY METALLIC



6265 SILVER



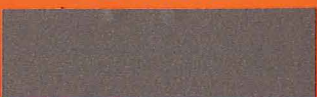
6196 METALLIC BLUE



6283 ALMOND



6197 MOSS GREEN METALLIC



6298 RICH BROWN METALLIC



6302 METALLIC GOLD



6319 MOJAVE RED



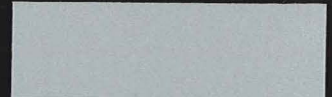
6304 FLAT BLACK



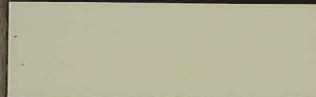
6320 COPPER



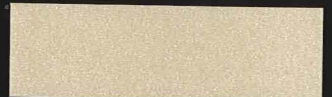
6306 HIGH HEAT PRIMER



6321 PEWTER



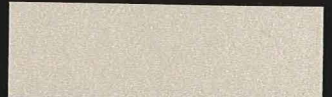
6307 SAND



6324 SUNSET



6309 METALLIC BLACK



6325 SURF SAND



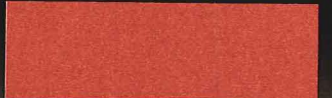
6310 BARK BROWN



6327 GREEN ILLUSION



6311 HONEY GLO BROWN



6329 SHIMMERING ROSE



6313 MAUVE



6332 NEW BRONZE



6318 PATRIOT BLUE



VENT PIPE PAINT

Available to you is The Stove Bright® User Guide. The User Guide provides details about surface preparation, application, and your first burn.

Actual paint and color chips may vary slightly from this printed representation.

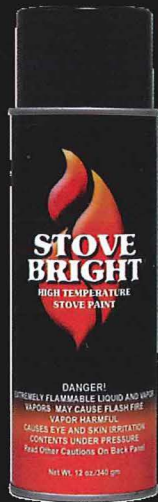
Find the User Guide before you start your project at:

- www.stovebright.com
- 800-537-7201
- info@forrestpaint.com

Visit our Stove Bright® "How to Videos" at: www.youtube.com/user/MrStoveBright

Global Leaders in High Temperature Coatings

Commonly used on:



- Wood stoves
- Vent Pipes
- Fireplace surrounds
- Fireboxes
- Boilers
- Furnaces
- Radiators
- Engines
- Auto exhausts
- Manifolds
- Mufflers
- Heaters
- Barbeques and much more!

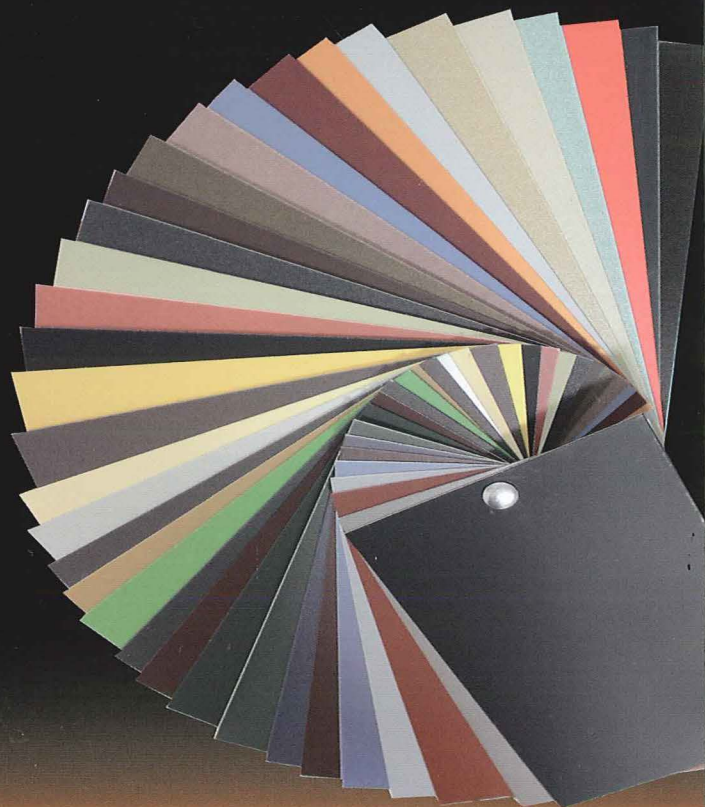
Stove Bright® High Temperature Paint is a high quality, fast drying coating for a variety of properly prepared metal surfaces. The formula is rust resistant and maintains excellent color stability with in-service temperatures reaching 1200°F / 650°C. Stove Bright® High Temperature Paint is the industry standard for hearth manufacturers, retailers, service professionals, and consumers.

Visit our Stove Bright® "How to Videos" at:
<http://www.youtube.com/user/MrStoveBright>

Manufactured by:
FORREST Technical Coatings
PO Box 22110 • 1011 McKinley
Eugene, OR 97402 USA
(800) 537-7201 • (541) 344-5137 fax
www.forrestpaint.com



Together Start to Finish



- Easy to use
- Wide selection of colors available
- Fast Drying
- Heat set for permanent color
- Resists rust - no primer needed indoors