

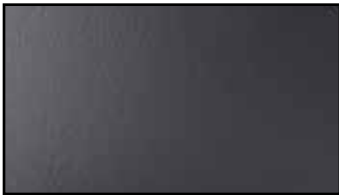


# FORREST POWDER COATINGS

Forrest Paint Co. has made heat resistant coatings for decades. We have developed heat resistant powder coatings to perform when exposed to temperatures ranging from 400°F (205°C) to 1200°F (650°C). The color chips shown below represent a selection of products we have made for our customers.

Contact Forrest Paint Co. at 1-800-537-7201 or through our website contact page at: <http://forrestpaint.com/contact/> to discuss your project and how our coatings can meet your needs.

*• Actual coating color, gloss and texture may vary from these representations.*



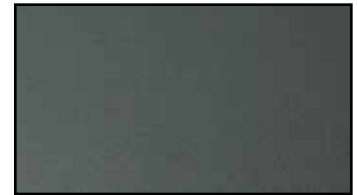
Muffler Black



Muffler Silver



T-2 Burgundy



Forrest Green



Green Texture



Black 30% Gloss



M-1 Charcoal



Flat Black



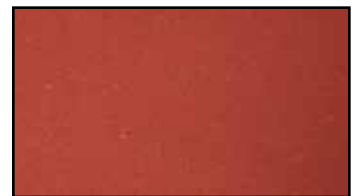
Metallic Black



Brushed Bronze



Granite



Terra Red



Dark Brick



Linden Green



Multi Spec Rust



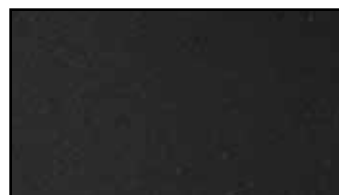
Multi Spec Brick



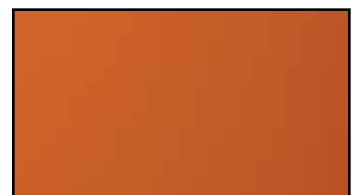
Dark Brick Multi-spec



Brownstone



S-1 Smooth Black



Int'l Orange



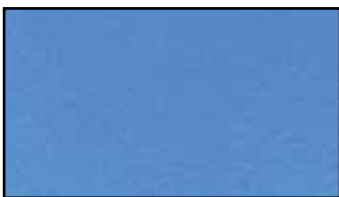
# FORREST POWDER COATINGS

Forrest Paint Co. brings innovative chemical engineering to temperature resistant powder coatings. Full-time chemists specializing in powder coatings allow us to deliver custom formulations and small batch color matching.

Our muffler coatings are tested and proven for ATVs, snowmobiles, motorcycles and other vehicle exhaust systems. We are among a select few powder manufacturers that deliver the high heat powder coatings that can survive this rigorous use.

We offer proven solutions for gas fireplace inserts and stove pipe. Whether you need to coat a heating appliance, a barbeque, or have a special need for a heat resistant coating you can count on Forrest Paint Co. to deliver.

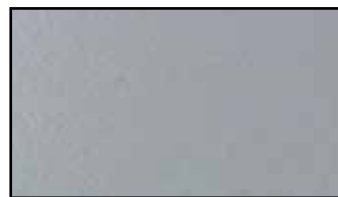
Contact us to request an appearance panel to see the actual coating on metal, or to discuss availability, pricing, and other details. See our Heat Resistant Coating reference sheet and Powder Product Guide for more information about specific color chips.



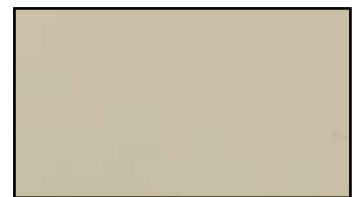
S-4 Blue



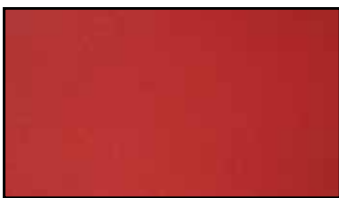
Medium Red



Gray



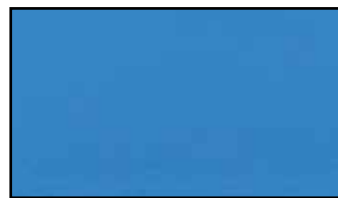
Creme



Bright Red



Almond



Aero Blue



Bright White



Silver Texture



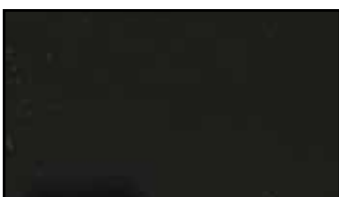
M-3 Burnished Bronze



Darkened Natural Iron



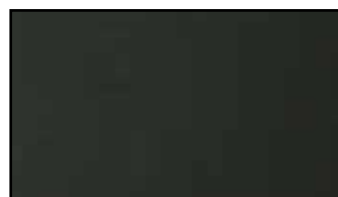
Copper Vein



Gloss Black 80% +



T-2 Textured Black



Gloss Dark Green



Gloss Black

**Forrest Paint Co. • 1011 McKinley Street • Eugene, OR 97402**  
**[www.forrestpaint.com](http://www.forrestpaint.com) • [www.forresttechblog.com](http://www.forresttechblog.com) • [www.stovebright.eu](http://www.stovebright.eu)**